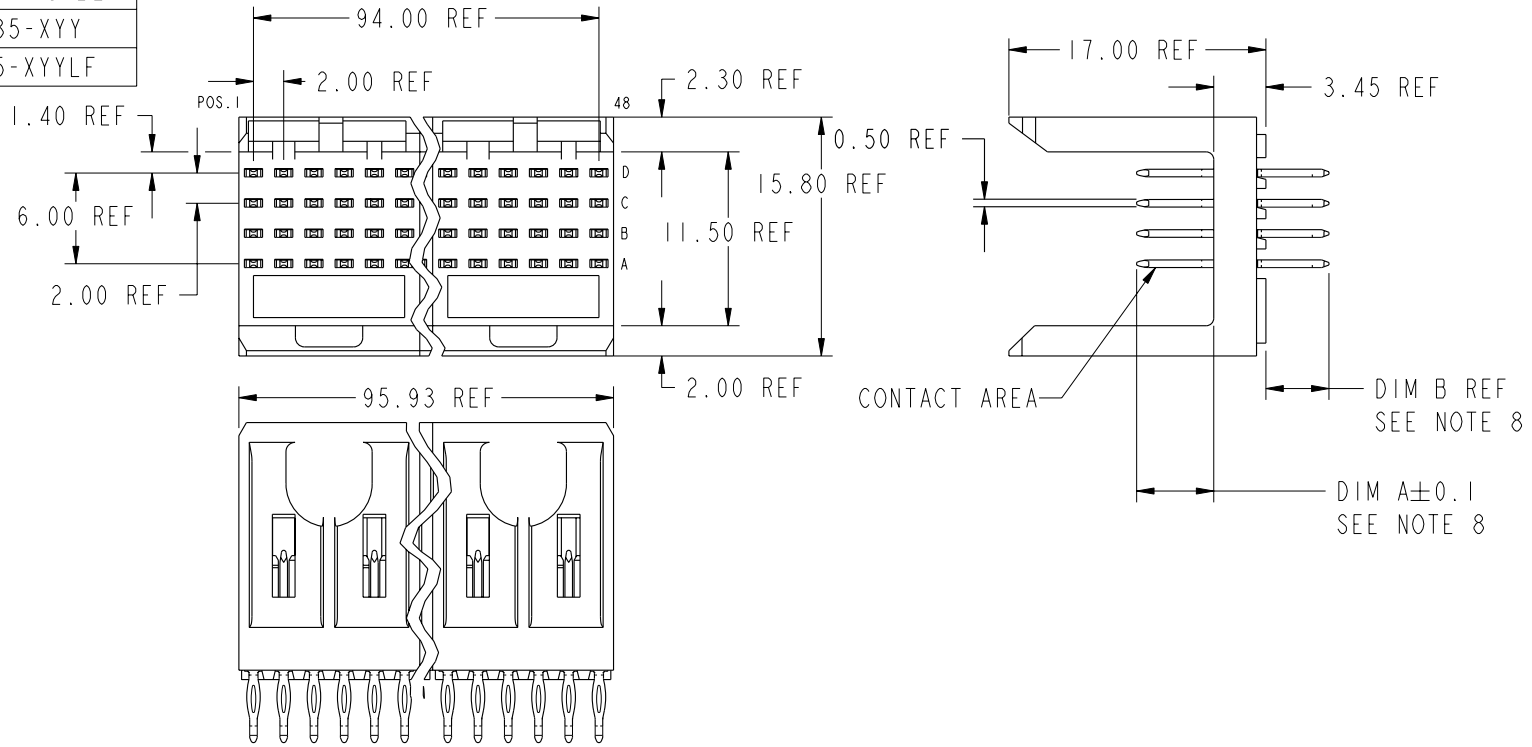


PRODUCT NUMBER
70235-XYX
70235-XYLF



PLATING IN CONTACT AREA

DASH NUMBER	PERFORMANCE LEVEL	NOTES
-AYY	TELCORDIA CO	SEE NOTE 9
-MYX	.38µm GOLD MIN.	-
-N1YY	TELCORDIA CO (NXT)	-
-N5YY	TELCORDIA UE (NXT)	-
-1YY	TELCORDIA CO	-
-2YY	TELECOM CLASS	-
-3YY	IEC CLASS 1	-
-5YY	TELCORDIA UE	-
-9YY	TELCORDIA CO	-
-AYYLF	TELCORDIA CO	SEE NOTE 10
-N1YYLF	TELCORDIA CO (NXT) IEC CLASS 1	SEE NOTE 10
-N5YYLF	TELCORDIA UE (NXT)	SEE NOTE 10
-1YYLF	TELCORDIA CO IEC CLASS 1	SEE NOTE 10
-2YYLF	TELECOM CLASS	SEE NOTE 10
-5YYLF	TELCORDIA UE	SEE NOTE 10

AG	AG	AG
19	20	21

mat'l code		--	tolerances unless otherwise specified				CUSTOMER			FCJ www.fciconnect.com										
ltr	ecr no.	dr	date	linear	0.X ±0.3		COPY			title										
AG	V06-0498	DCH	2006-05-31		0.XX ±0.13		projection			METRAL SIGNAL HEADER 8 MOD, 4 ROW PRESS-FIT										
-	-	-	-	angles	.XXX ±.051					product family										
AB	V03-1319	DAI	12/16/03		0° ±2°					METRAL										
AC	V04-0554	TAB	06/07/04	dr	T.BRUNGARD	11/19/99	MM			code										
AD	V05-0079	HTB	02/03/05	enr	M.STRAWSER	11/19/99	2:1			213										
AE	V05-0359	DAI	04/21/05	chr	M.STRAWSER	11/19/99	A			sheet										
AF	V05-1030	LP	11/18/05	appd	M.STRAWSER	02/29/00	70235			1 of 21										
sheet index	revision	AG	AG	AG	AG	AG	AG	AG	AG	AG	AG	AG	AG	AG	AG	AG	AG	AG	AG	AG
	sheet	1	2	3	4	5	6	7	8	9	10	11	12	13	14	15	16	17	18	

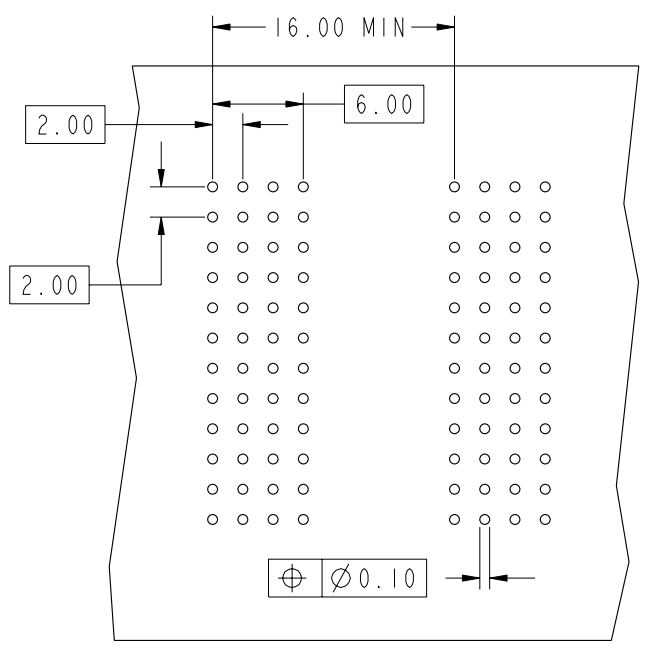


This document is the property of and embodies CONFIDENTIAL and PROPRIETARY information of FCJ. No part of the information shown on this document may be used in any way or disclosed to others without the written consent of FCJ. Copyright FCJ.

1 | 2

3 |

4



REQUIRED PC BOARD LAYOUT  
COMPONENT SIDE

SEE PRINT 58351 FOR  
ADDITIONAL PCB INFORMATION

KEY		
CODE	DIMENSIONS	
	DIM "A" MATE	DIM "B" TAIL
1	5.00	4.30
2	5.75	4.30
3	6.50	4.30
4	7.25	4.30
5	5.00	13.60
6	5.75	13.60
7	6.50	13.60
8	7.25	13.60
9	5.00	17.00
10	5.75	17.00
11	6.50	17.00
12	7.25	17.00
13	8.25	4.30
14	8.25	13.60
15	8.25	17.00
19	8.00	4.30
20	8.00	13.60
21	8.00	17.00



This document is the property of and embodies  
 CONFIDENTIAL and PROPRIETARY information of FCJ.  
 No part of the information shown on this  
 document may be used in any way or disclosed  
 to others without the written consent of FCJ.  
 Copyright FCJ.

mat'l code				--		tolerances unless otherwise specified		CUSTOMER		www.fciconnect.com	
ltr	ecm no.	dr	date	linear	0.X ±0.3		COPY			title	
AG					0.XX ±0.13		projection			METRAL SIGNAL HEADER	
					.XXX ±.051					8 MOD, 4 ROW PRESS-FIT	
				angles	0° ±2°				product family		
				dr	T.BRUNGARD	11/19/99	scale		METRAL		
				engr	M.STRAWSER	11/19/99	1:1		code		
				chr	M.STRAWSER	11/19/99	A		213		
				appd	M.STRAWSER	02/29/00			sheet		
sheet index		revision sheet						size		2	
								dwg no		70235	
								cage code		22526	

1 | 2

3 |

4

Pro/E









































PRODUCT NUMBER
70235-XXX
70235-XYLFF

NOTES:

1. FOR DIM A AND B SEE SHEET 2 AND UP.
2. BODY MATERIAL: LIQUID CRYSTAL  
POLYMER 30 % GLASS.  
FLAME RETARDANT ACC. UL 94-V0.
3. PIN MATERIAL:  
PHOSPHOR BRONZE.
4. PLATING ON PRESS-FIT TAIL:  
70235 -XXX IS SnPb  
70235-XYLFF IS SN (LEAD FREE)  
PLATING ON CONTACT AREA CONFORMS TO PERFORMANCE LEVEL SHOWN IN TABLE.
5. PRODUCT MARKING:  
PART NUMBER DESIGNATION & BATCH I.D.
6. ALL PRODUCTS WITH PART NUMBERS SHOWN IN SUBSEQUENT TABLES WILL BE PACKAGED IN TUBES. IF TRAY PACKAGING IS REQUIRED, A SUFFIX "P" WILL BE ADDED TO THE END OF THE PART NUMBER. EXAMPLE: XXXXX-XXXP OR XXXXX-XXXPLF
7. PRODUCT SPECIFICATION GS-12-180  
APPLICATION SPECIFICATION BUS-20-073
- ⑧ AFTER INSERTION INTO CIRCUIT BOARD WITH QUALIFIED TOOL.
- ⑨ -A PLATING HAS Au FLASH IN PRESS FIT AREA (LEAD FREE).
- ⑩ THE PRODUCTS WHERE THE PART NUMBER ENDS IN LF MEET THE EUROPEAN UNION DIRECTIVES AND OTHER COUNTRY REGULATIONS AS DESCRIBED IN GS-22-008.
- ⑪ FOR LEAD FREE PART NUMBERS, ADD AN "LF" SUFFIX. EXAMPLE: 70235-X01LFF
12. ALL PRODUCTS EXCEPT THOSE WITH PART NUMBERS CONTAINING (DRAWING NO.)-N1--- OR (DRAWING NO.)-N5---WILL WITHSTAND EXPOSURE TO 260°C FOR 60 SECONDS IN A CONVECTION, INFRA-RED OR VAPOR PHASE REFLOW OVEN. PART NUMBERS (DRAWING NO.)-N1--- AND (DRAWINGS NO.)-N5---WILL NOT WITHSTAND REFLOW AND Au CONTACT SURFACE OF THE CONTACTS SHALL BE EXPOSED TO A MAXIMUM 140°C FOR NO LONGER THAN 15 SECONDS IN A WAVE SOLDER APPLICATION.

A


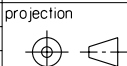
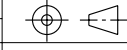


A



This document is the property of and embodies CONFIDENTIAL and PROPRIETARY information of FCI. No part of the information shown on this document may be used in any way or disclosed to others without the written consent of FCI. Copyright FCI.

B

B

mat'l code				--		tolerances unless otherwise specified		CUSTOMER		 www.fciconnect.com		
ltr	ecr no.	dr	date	linear	0.X ±0.3		COPY		 title METRAL SIGNAL HEADER 8 MOD, 4 ROW PRESS-FIT			
AG					0.XX ±0.13		projection					
					.XXX ±.051		 0° ±2°					
				angles	0° ±2°		 MM		product family METRAL code			
				dr	T.BRUNGARD	11/19/99	 scale 1:1		size		213	
				engr	M.STRAWSER	11/19/99			dwg no		sheet	
				chr	M.STRAWSER	11/19/99			70235		21	
				appd	M.STRAWSER	02/29/00			A			
sheet index	revision sheet											